

OAKFIELD PARK

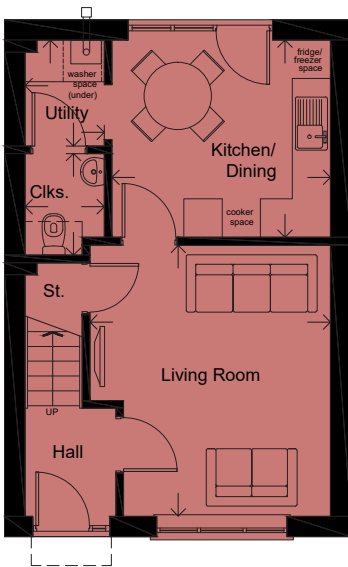


AFFORDABLE HOME

2020.05a

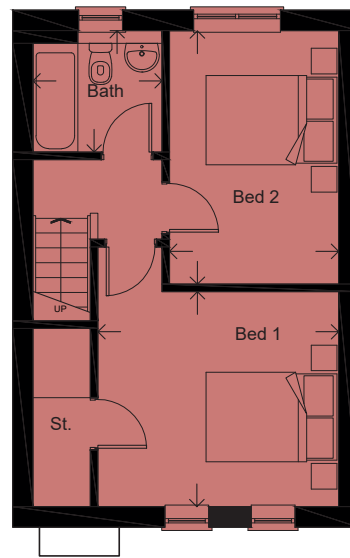
THE CROOKLANDS 'A'- PLOT 69*, 70*, 71 & 72 (* OPPOSITE HAND)
2 BEDROOM TERRACED HOUSE WITH ALLOCATED PARKING

FLOOR AREA: 71 M² | 765 SQ FT



GROUND FLOOR

LIVING ROOM	4.24 x 3.77m		13'11" x 12'4"
KITCHEN/DINING	3.42 x 3.09m		11'3" x 10'2"
CLOAKROOM	1.59 x 1.24m		5'3" x 4'1"
UTILITY	1.66 x 1.24m		5'5" x 4'1"



FIRST FLOOR

BEDROOM 1	3.77 x 3.37m		12'4" x 11'1"
BEDROOM 2	3.97 x 2.64m		13'0" x 8'8"
BATHROOM	2.02 x 1.90m		6'8" x 6'3"

Please note: Arrows denote measurement positions. Floor plans and house type illustrations shown for guidance purposes only. All dimensions are provisional and should be checked on site. Colours, sizes and styles of doors, windows, landscape features and other such details may vary. Some plots are the opposite hand to the illustration and floor plans.