

OAKFIELD PARK

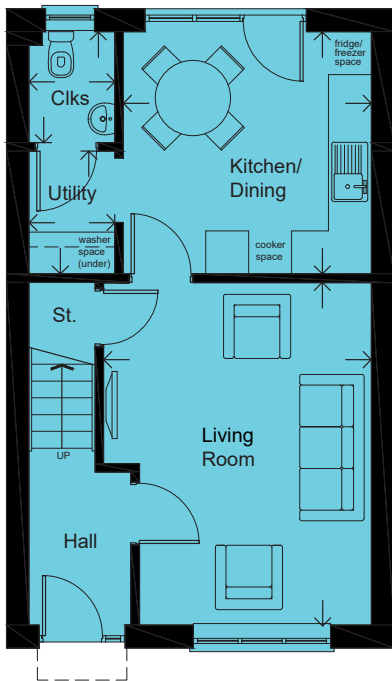


AFFORDABLE HOME

2020.05a

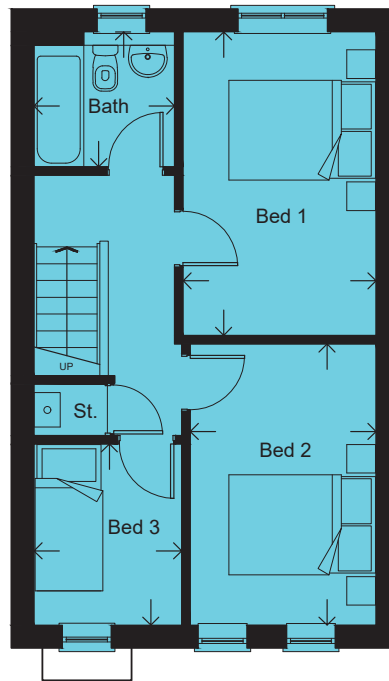
THE MILNTHORPE 'A'- PLOTS 67, 68*, 73 & 74* (*OPPOSITE HAND)
 3 BEDROOM SEMI-DETACHED HOUSE WITH ALLOCATED PARKING

FLOOR AREA: 79 M² | 856 SQ FT



GROUND FLOOR

LIVING ROOM	4.80 x 3.77m		15'9" x 12'4"
KITCHEN / DINING	3.47 x 3.39m		11'5" x 11'1"
CLOAKROOM	1.55 x 1.20m		5'1" x 3'11"
UTILITY	1.72 x 1.20m		5'8" x 3'11"



FIRST FLOOR

BEDROOM 1	4.25 x 2.70m		13'11" x 8'10"
BEDROOM 2	3.94 x 2.60m		12'11" x 8'6"
BEDROOM 3	2.54 x 2.07m		8'4" x 6'9"
BATHROOM	1.97 x 1.89m		6'6" x 6'2"

Please note: Arrows denote measurement positions. Floor plans and house type illustrations shown for guidance purposes only. All dimensions are provisional and should be checked on site. Colours, sizes and styles of doors, windows, landscape features and other such details may vary. Some plots are the opposite hand to the illustration and floor plans.