

OAKFIELD PARK

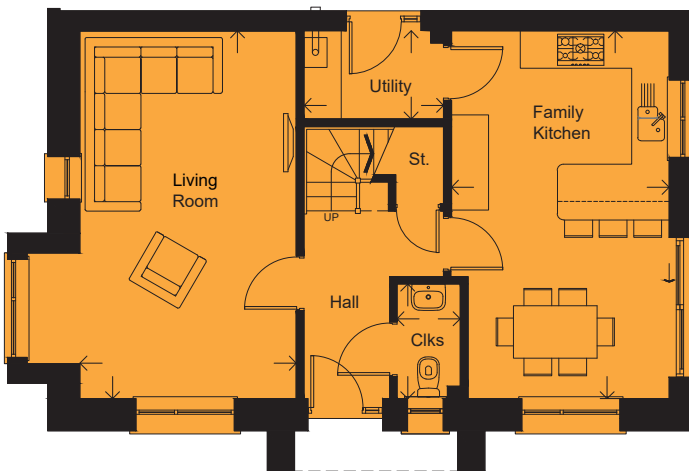


## THE SEDGWICK 'D' - PLOT 65

### 3 BEDROOM DETACHED HOUSE WITH DETACHED GARAGE

FLOOR AREA (EXCLUDING GARAGE): 114 M<sup>2</sup> | 1231 SQ FT

2020.05a



#### GROUND FLOOR

LIVING ROOM	5.94 x 3.49m		19'6" x 11'5"
FAMILY KITCHEN	5.94 x 3.52m		19'6" x 11'7"
CLOAKROOM	1.85 x 1.02m		6'1" x 3'4"
UTILITY	2.25 x 1.42m		7'5" x 4'8"
GARAGE	5.64 x 3.00m		18'6" x 9'10"



#### FIRST FLOOR

MASTER BEDROOM	3.89 x 3.50m		12'9" x 11'6"
EN-SUITE	2.70 x 1.43m		8'10" x 4'8"
DRESSING	2.28 x 1.93m		7'6" x 6'4"
BEDROOM 2	4.31 x 2.86m		14'2" x 9'5"
BEDROOM 3	2.97 x 2.47m		9'9" x 8'1"
BATHROOM	2.22 x 1.92m		7'3" x 6'4"

Please note: Arrows denote measurement positions. Floor plans and house type illustrations shown for guidance purposes only. All dimensions are provisional and should be checked on site. Colours, sizes and styles of doors, windows, landscape features and other such details may vary. Some plots are the opposite hand to the illustration and floor plans.