

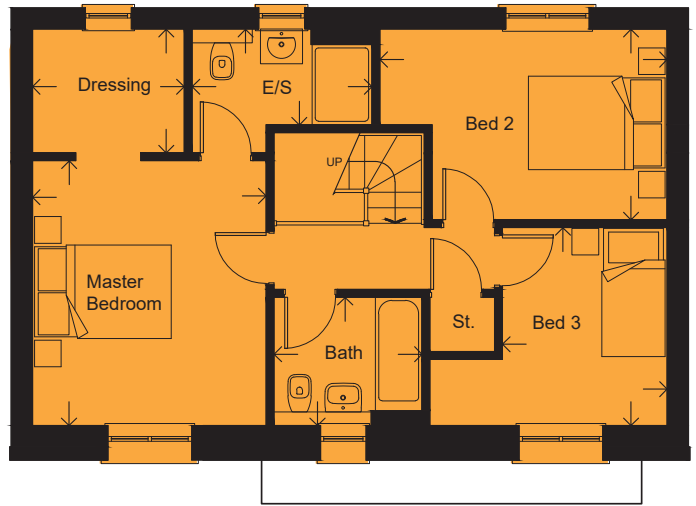
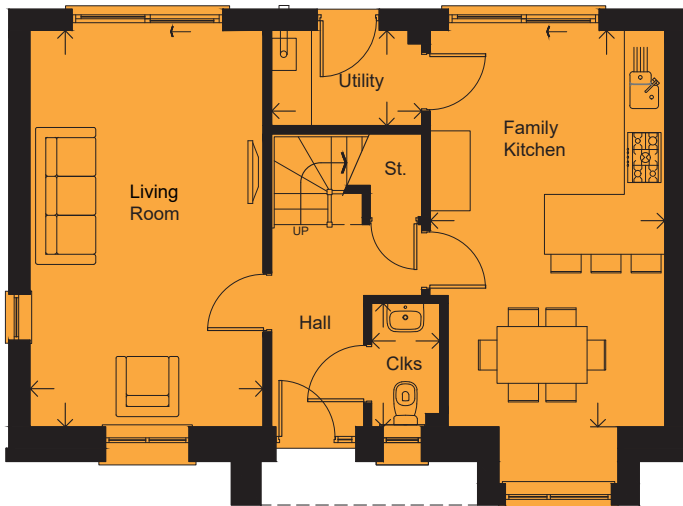
OAKFIELD PARK



THE SEDGWICK 'C' - PLOTS 64* & 66 (*OPPOSITE HAND) 3 BEDROOM DETACHED HOUSE WITH DETACHED GARAGE

2020.05a

FLOOR AREA (EXCLUDING GARAGE): 114 M² | 1231 SQ FT



GROUND FLOOR

LIVING ROOM	5.94 x 3.49m		19'6" x 11'5"
FAMILY KITCHEN	5.94 x 3.52m		19'6" x 11'7"
CLOAKROOM	1.85 x 1.02m		6'1" x 3'4"
UTILITY	2.25 x 1.42m		7'5" x 4'8"
GARAGE	5.64 x 3.00m		18'6" x 9'10"

FIRST FLOOR

MASTER BEDROOM	3.97 x 3.50m		13'0" x 11'6"
EN-SUITE	2.70 x 1.43m		8'10" x 4'8"
DRESSING	2.27 x 1.85m		7'5" x 6'1"
BEDROOM 2	4.31 x 2.86m		14'2" x 9'5"
BEDROOM 3	2.97 x 2.47m		9'9" x 8'1"
BATHROOM	2.22 x 1.92m		7'3" x 6'4"

Please note: Arrows denote measurement positions. Floor plans and house type illustrations shown for guidance purposes only. All dimensions are provisional and should be checked on site. Colours, sizes and styles of doors, windows, landscape features and other such details may vary. Some plots are the opposite hand to the illustration and floor plans.