

OAKFIELD PARK



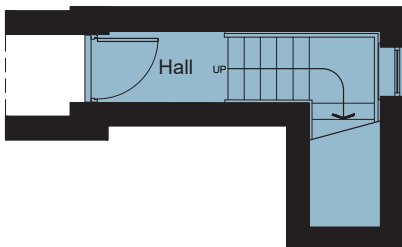
AFFORDABLE HOME

2020.05a

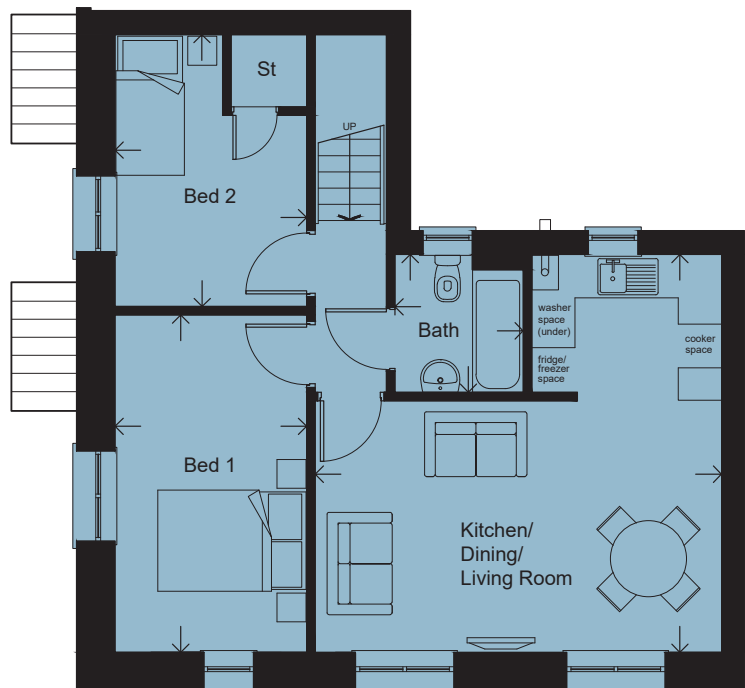
THE LUPTON 'B'- PLOT 46

2 BEDROOM FIRST FLOOR APARTMENT WITH ALLOCATED PARKING

FLOOR AREA: 63 M² | 684 SQ FT



GROUND FLOOR



FIRST FLOOR

LIVING/KITCHEN/DINING	5.63 x 5.51m		18'6" x 18'11"
BEDROOM 1	4.67 x 2.66m		15'4" x 8'9"
BEDROOM 2	3.77 x 2.66m		12'4" x 8'9"
BATHROOM	1.91 x 1.77m		6'3" x 5'10"

Please note: Arrows denote measurement positions. Floor plans and house type illustrations shown for guidance purposes only. All dimensions are provisional and should be checked on site. Colours, sizes and styles of doors, windows, landscape features and other such details may vary. Some plots are the opposite hand to the illustration and floor plans.