

OAKFIELD PARK

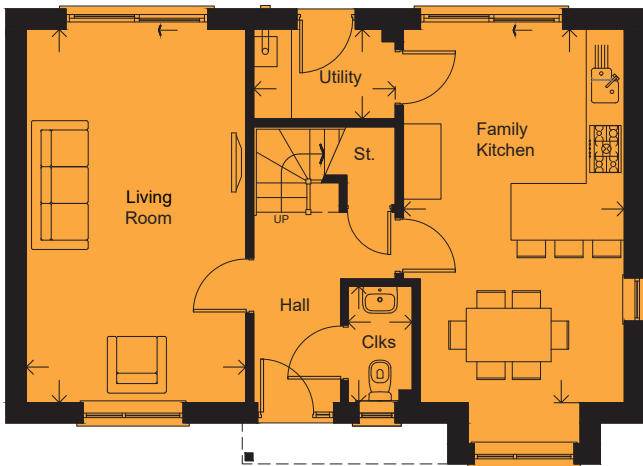


## THE SEDGWICK 'A'- PLOT 40

### 3 BEDROOM DETACHED HOUSE WITH DETACHED GARAGE

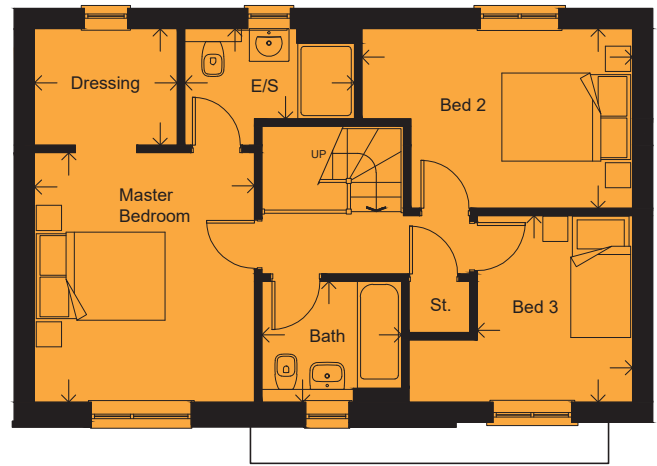
2019.09a

FLOOR AREA (EXCLUDING GARAGE): 114 M<sup>2</sup> | 1227 SQ FT



#### GROUND FLOOR

LIVING ROOM	5.94 x 3.49m		19'6" x 11'5"
FAMILY KITCHEN	5.94 x 3.52m		19'6" x 11'7"
CLOAKROOM	1.85 x 1.02m		6'1" x 3'4"
UTILITY	2.25 x 1.42m		7'5" x 4'8"
GARAGE	6.07 x 2.97m		19'11" x 9'9"



#### FIRST FLOOR

MASTER BEDROOM	3.97 x 3.50m		13'0" x 11'6"
EN-SUITE	2.70 x 1.43m		8'10" x 4'8"
DRESSING	2.27 x 1.85m		7'5" x 6'1"
BEDROOM 2	4.31 x 2.86m		14'2" x 9'5"
BEDROOM 3	2.97 x 2.47m		9'9" x 8'1"
BATHROOM	2.22 x 1.92m		7'3" x 6'4"

Please note: Arrows denote measurement positions. Floor plans and house type illustrations shown for guidance purposes only. All dimensions are provisional and should be checked on site. Colours, sizes and styles of doors, windows, landscape features and other such details may vary.