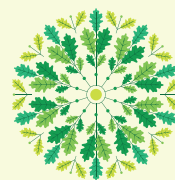


THE DALEMAIN 'A'

PLOTS 36 & 37* (*OPPOSITE HAND)



OAKFIELD PARK



3 BEDROOM SEMI-DETACHED HOUSE WITH INTEGRAL GARAGE

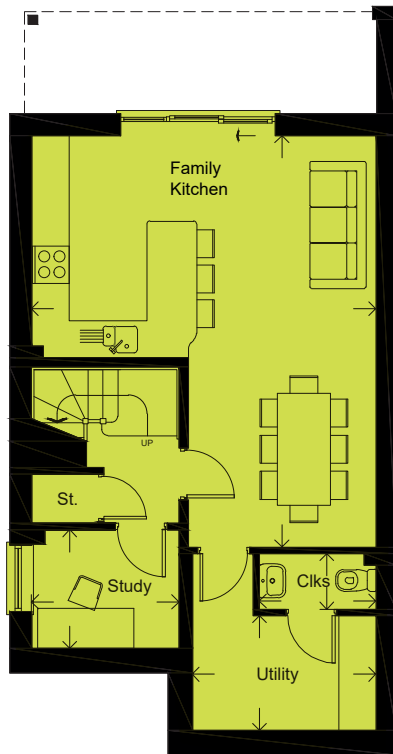
FLOOR AREA (EXCLUDING GARAGE):
134 M2 | 1445 SQ FT

PLEASE SEE REVERSE FOR FLOOR PLANS

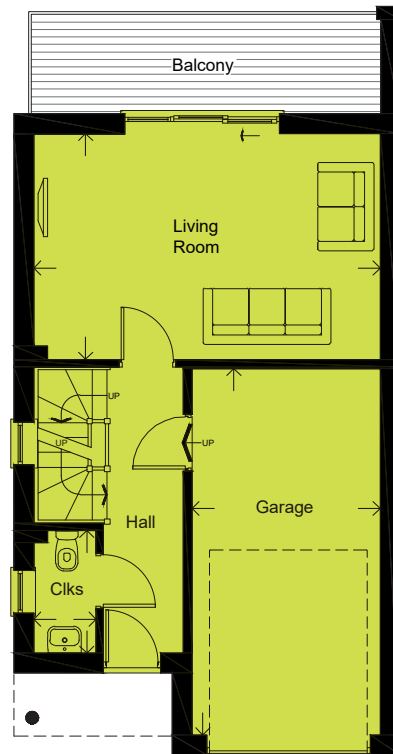


Please note: Arrows denote measurement positions. Floor plans and house type illustrations shown for guidance purposes only. All dimensions are provisional and should be checked on site. Colours, sizes and styles of doors, windows, landscape features and other such details may vary. Some plots are the opposite hand to the illustration and floor plans.

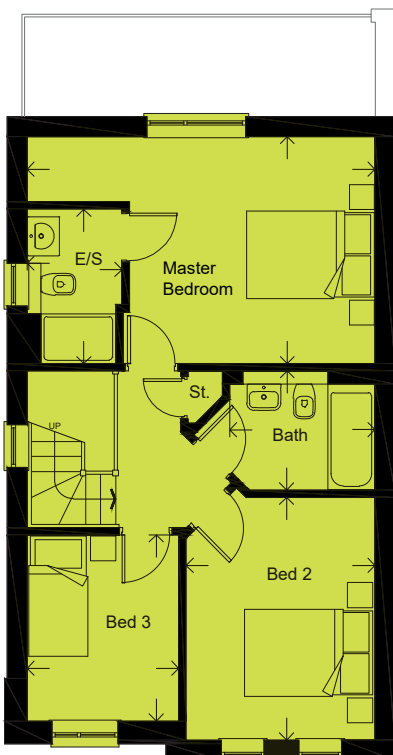
LOWER GROUND FLOOR



UPPER GROUND FLOOR



FIRST FLOOR



LOWER GROUND FLOOR

FAMILY KITCHEN	6.63 x 5.54m	21'9" x 18'2"
STUDY	2.38 x 1.91m	7'10" x 6'3"
CLOAKS	1.88 x 0.90m	6'2" x 2'11"
UTILITY	4.06 x 1.87m	13'4" x 6'2"

UPPER GROUND FLOOR

LIVING ROOM	5.58 x 3.64m	18'4" x 11'11"
CLOAKS	1.97 x 1.00m	6'6" x 3'3"
GARAGE	5.90 x 3.03m	19'4" x 9'11"

FIRST FLOOR

MASTER BEDROOM	5.58 x 3.64m	18'4" x 11'11"
EN-SUITE	2.48 x 1.52m	8'2" x 5'0"
BEDROOM 2	3.90 x 3.03m	12'10" x 9'11"
BEDROOM 3	2.99 x 2.43m	9'10" x 8'0"
BATHROOM	2.33 x 1.91m	7'8" x 6'3"

Please note: Arrows denote measurement positions. Floor plans and house type illustrations shown for guidance purposes only. All dimensions are provisional and should be checked on site. Colours, sizes and styles of doors, windows, landscape features and other such details may vary. Some plots are the opposite hand to the illustration and floor plans.