

OAKFIELD PARK



## THE LEASGILL 'C'- PLOTS 30, 31 & 32 4 BEDROOM DETACHED HOUSE WITH INTEGRAL GARAGE

2019.06a

FLOOR AREA: 243 M<sup>2</sup> | 2615 SQ FT

### LOWER GROUND FLOOR

#### FAMILY KITCHEN

9.76 x 5.39m  
32'0" x 17'8"

#### MEDIA ROOM

7.11 x 3.68m  
23'4" x 12'1"

#### BOOT ROOM

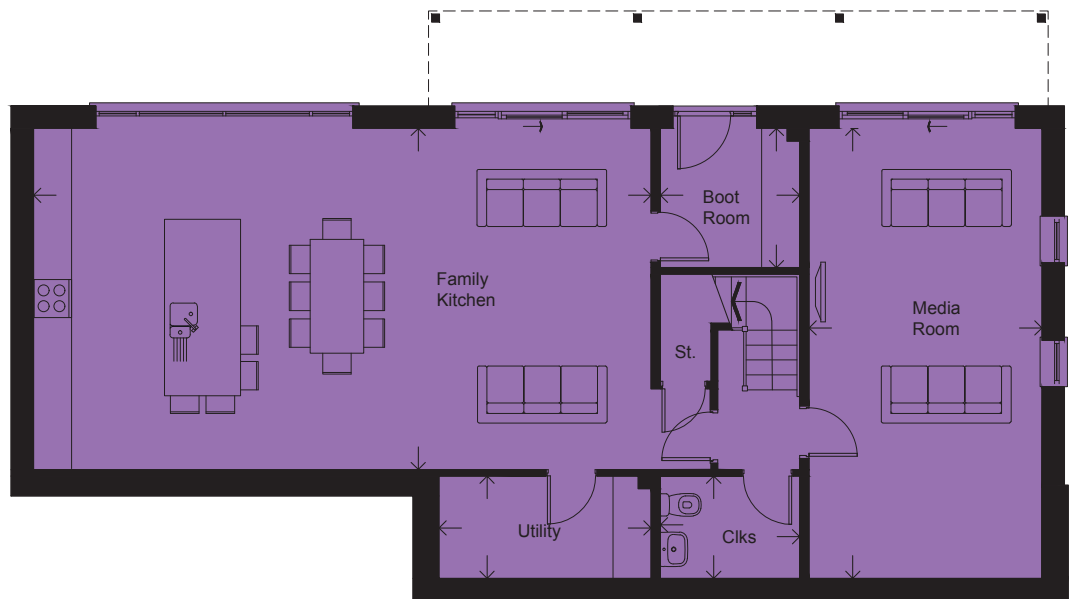
2.20 x 2.20m  
7'3" x 7'3"

#### UTILITY

3.35 x 1.61m  
11'0" x 5'3"

#### CLOAKROOM

2.20 x 1.61m  
7'3" x 5'3"



SEE OVERLEAF FOR OTHER FLOORS

## UPPER GROUND FLOOR

### LIVING ROOM

7.22 x 3.75m  
23'8" x 12'4"

### GUEST BEDROOM

5.06 x 3.46m  
16'7" x 11'4"

### EN-SUITE

2.22 x 2.20m  
7'3" x 7'3"

### STUDY

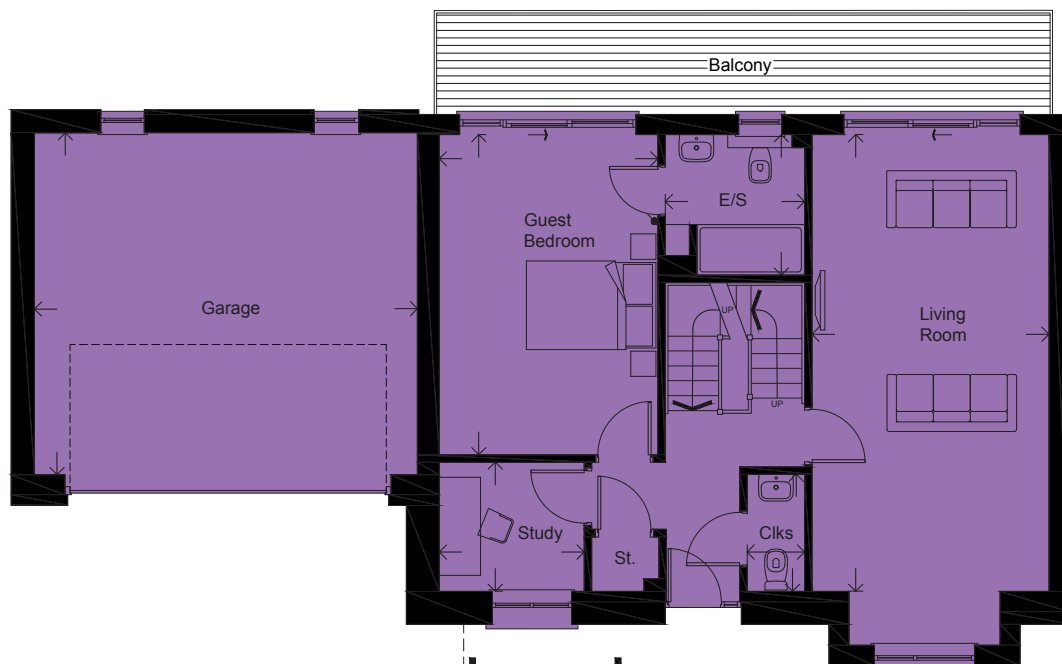
2.29 x 2.04m  
7'6" x 6'8"

### CLOAKROOM

1.85 x 0.91m  
6'1" x 3'0"

### GARAGE

6.05 x 5.41m  
19'10" x 17'9"



## FIRST FLOOR

### MASTER BEDROOM

5.18 x 3.46m  
17'0" x 11'4"

### EN-SUITE

2.22 x 2.20m  
7'3" x 7'3"

### DRESSING

2.37 x 1.92m  
7'9" x 6'4"

### BEDROOM 3

3.75 x 3.51m  
12'4" x 11'6"

### BEDROOM 4

3.75 x 3.59m  
12'4" x 11'9"

### BATHROOM

2.37 x 1.92m  
7'9" x 6'4"

