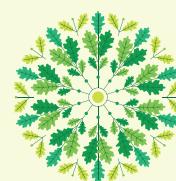


# THE CASTERTON

## PLOTS 33, 34 & 35



OAKFIELD PARK



## 4 BEDROOM DETACHED HOUSE WITH INTEGRAL GARAGE

FLOOR AREA (EXCLUDING GARAGE): 132 M<sup>2</sup> | 1420 SQ FT

[PLEASE SEE REVERSE FOR FLOOR PLANS](#)

Please Note: Arrows denote measurement positions. Floor plans and house type illustrations shown for guidance purposes only. All dimensions are provisional and should be checked on site. Colours, sizes and styles of doors, windows, landscape features and other such details may vary.

## GROUND FLOOR

### LIVING ROOM

5.60 x 4.00m | 18'4" x 13'1"

### KITCHEN/DINING

5.44 x 4.26m | 17'10" x 14'0"

### CLOAKROOM

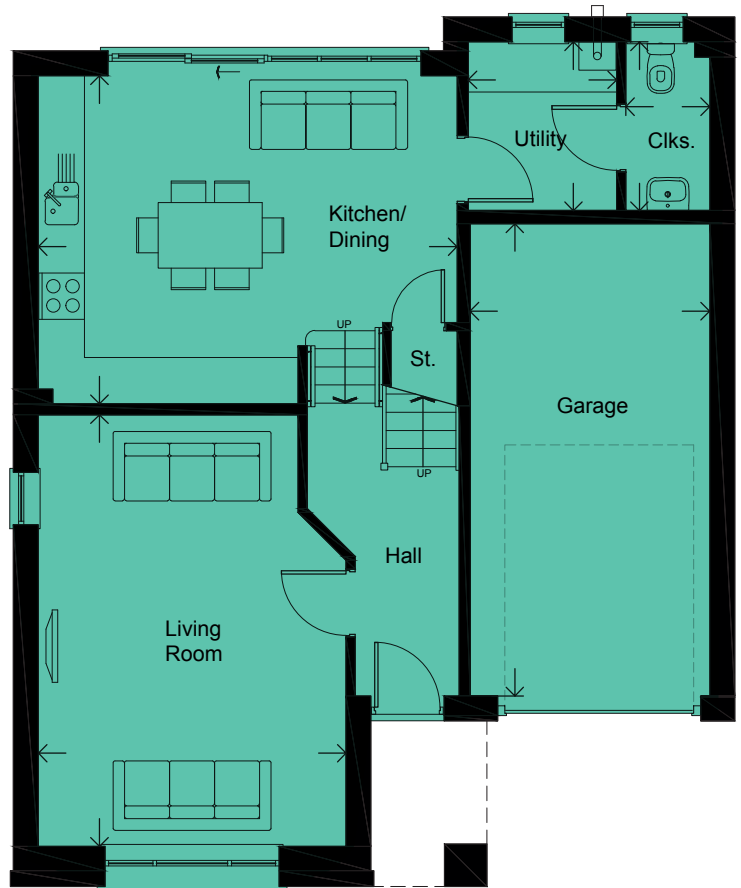
2.19 x 1.09m | 7'2" x 3'7"

### UTILITY

2.19 x 1.93m | 7'2" x 6'4"

### GARAGE

6.13 x 3.11m | 20'1" x 10'2"



## FIRST FLOOR

### MASTER BEDROOM

4.28 x 3.70m | 14'1" x 12'2"

### EN-SUITE

2.20 x 1.62m | 7'3" x 5'4"

### BEDROOM 2

3.62 x 3.11m | 11'11" x 10'2"

### BEDROOM 3

3.79 x 2.75m | 12'5" x 9'0"

### BEDROOM 4

3.31 x 2.59m | 10'10" x 8'6"

### STUDY

2.39 x 1.97m | 7'10" x 6'6"

### BATHROOM

2.15 x 1.71m | 7'1" x 5'7"



Please Note: Arrows denote measurement positions. Floor plans and house type illustrations shown for guidance purposes only.

All dimensions are provisional and should be checked on site. Colours, sizes and styles of doors, windows, landscape features and other such details may vary.