

OAKFIELD PARK



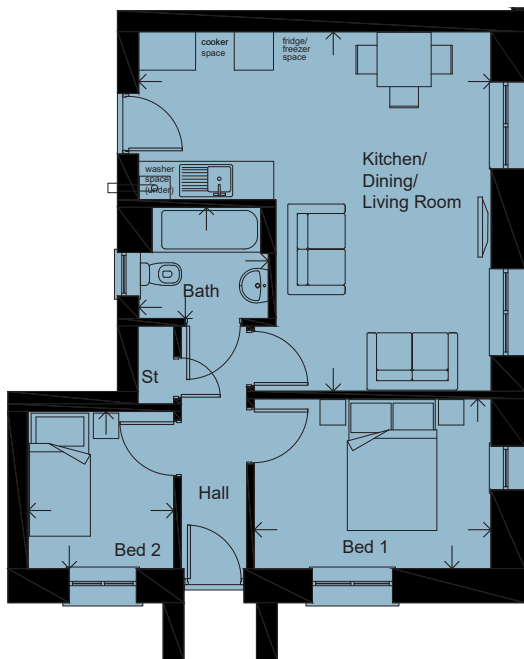
## AFFORDABLE HOME

2019.04a

# THE LUPTON 'A'- PLOT 20

## 2 BEDROOM GROUND FLOOR APARTMENT WITH ALLOCATED PARKING

FLOOR AREA: 50 M<sup>2</sup> | 540 SQ FT



### GROUND FLOOR

LIVING/KITCHEN/DINING	5.62 x 5.51m		18'5" x 18'1"
BEDROOM 1	3.70 x 2.66m		12'2" x 8'9"
BEDROOM 2	2.46 x 2.28m		8'1" x 7'6"
BATHROOM	2.03 x 1.74m		6'8" x 5'9"

Please note: Arrows denote measurement positions. Floor plans and house type illustrations shown for guidance purposes only. All dimensions are provisional and should be checked on site. Colours, sizes and styles of doors, windows, landscape features and other such details may vary.