

OAKFIELD PARK



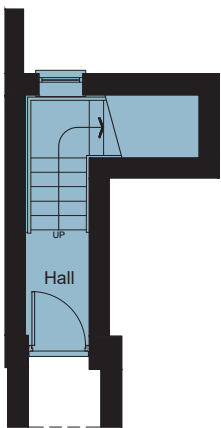
AFFORDABLE HOME

2019.04a

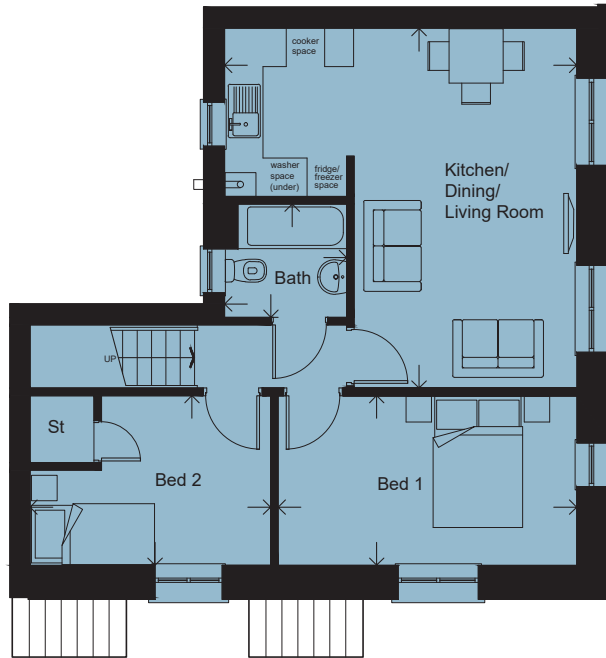
## THE LUPTON 'B'- PLOT 19

2 BEDROOM FIRST FLOOR APARTMENT WITH ALLOCATED PARKING

FLOOR AREA: 63 M<sup>2</sup> | 680 SQ FT



GROUND FLOOR



FIRST FLOOR

LIVING/KITCHEN/DINING	5.63 x 5.51m		18'6" x 18'1"
BEDROOM 1	4.67 x 2.66m		15'4" x 8'9"
BEDROOM 2	3.77 x 2.66m		12'4" x 8'9"
BATHROOM	1.91 x 1.77m		6'3" x 5'10"

Please note: Arrows denote measurement positions. Floor plans and house type illustrations shown for guidance purposes only. All dimensions are provisional and should be checked on site. Colours, sizes and styles of doors, windows, landscape features and other such details may vary.