

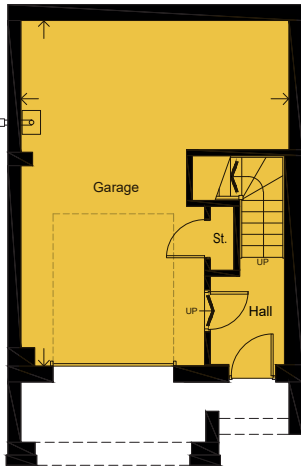
OAKFIELD PARK



THE MILLFIELD 'A'- PLOTS 5* & 6 (*OPPOSITE HAND) 3 BEDROOM SEMI DETACHED HOUSE WITH INTEGRAL GARAGE

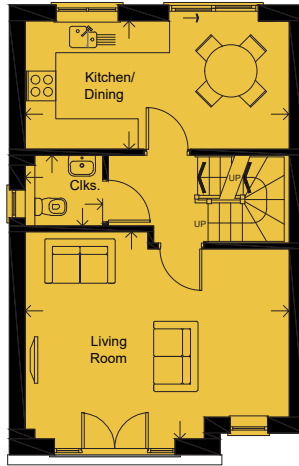
2018.11a

FLOOR AREA (EXCLUDING GARAGE): 94 M² | 1017 SQ FT



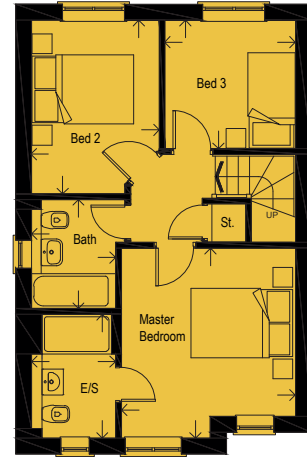
LOWER GROUND FLOOR

GARAGE
6.96 x 5.12m | 22'10" x 16'10"



UPPER GROUND FLOOR

LIVING ROOM
5.34 x 4.19m | 17'6" x 13'9"
KITCHEN/DINING
5.34 x 2.60m | 17'6" x 8'6"
CLOAKS
1.57 x 1.43m | 5'2" x 4'8"



FIRST FLOOR

MASTER BEDROOM
3.84 x 3.52m | 12'7" x 11'7"
EN-SUITE
2.51 x 1.70m | 8'3" x 5'7"
BEDROOM 2
3.51 x 2.58m | 11'6" x 8'6"
BEDROOM 3
2.63 x 2.60m | 8'8" x 8'6"
BATHROOM
2.20 x 1.70m | 7'3" x 5'7"

Please note: Arrows denote measurement positions. Floor plans and house type illustrations shown for guidance purposes only. All dimensions are provisional and should be checked on site. Colours, sizes and styles of doors, windows, landscape features and other such details may vary.