

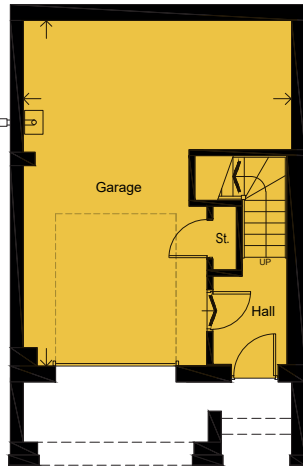
OAKFIELD PARK



## THE MILLFIELD 'C'- PLOTS 3\* & 8 (\*OPPOSITE HAND) 3 BEDROOM SEMI DETACHED HOUSE WITH INTEGRAL GARAGE

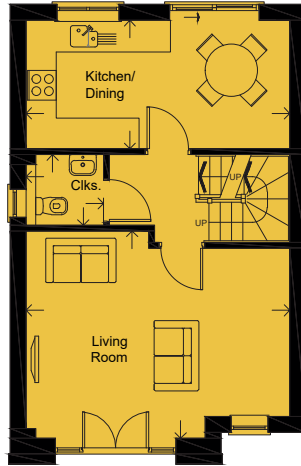
2018.11a

FLOOR AREA (EXCLUDING GARAGE): 94 M<sup>2</sup> | 1017 SQ FT



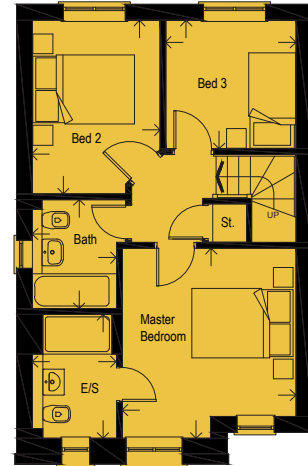
### LOWER GROUND FLOOR

**GARAGE**  
6.96 x 5.12m | 22'10" x 16'10"



### UPPER GROUND FLOOR

**LIVING ROOM**  
5.34 x 4.19m | 17'6" x 13'9"  
**KITCHEN/DINING**  
5.34 x 2.60m | 17'6" x 8'6"  
**CLOAKS**  
1.57 x 1.43m | 5'2" x 4'8"



### FIRST FLOOR

**MASTER BEDROOM**  
3.84 x 3.52m | 12'7" x 11'7"  
**EN-SUITE**  
2.51 x 1.70m | 8'3" x 5'7"  
**BEDROOM 2**  
3.51 x 2.58m | 11'6" x 8'6"  
**BEDROOM 3**  
2.63 x 2.60m | 8'8" x 8'6"  
**BATHROOM**  
2.20 x 1.70m | 7'3" x 5'7"

Please note: Arrows denote measurement positions. Floor plans and house type illustrations shown for guidance purposes only. All dimensions are provisional and should be checked on site. Colours, sizes and styles of doors, windows, landscape features and other such details may vary.