

OAKFIELD PARK

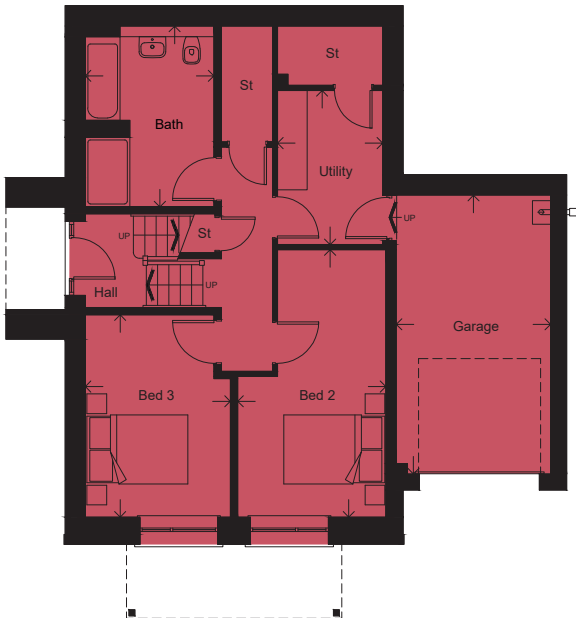


THE DALTON 'A'- PLOT 1

3 BEDROOM DETACHED HOUSE WITH INTEGRAL GARAGE

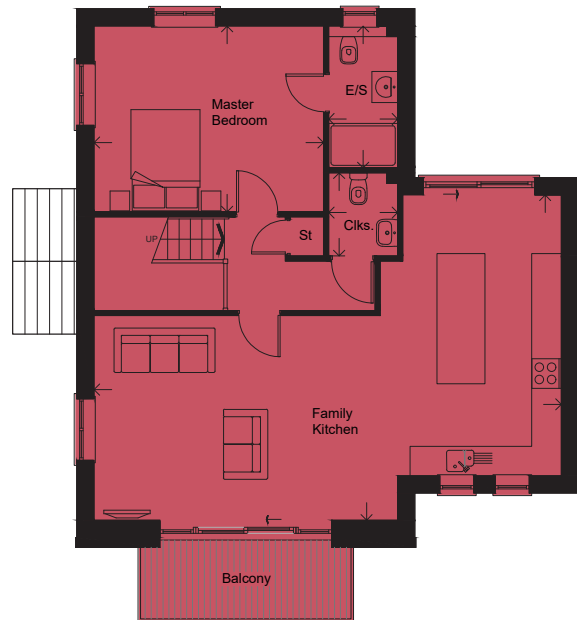
2019.09

FLOOR AREA (EXCLUDING GARAGE): 141 M² | 1520 SQ FT



LOWER GROUND FLOOR

BEDROOM 2	5.44 x 3.00m		17'10" x 9'10"
BEDROOM 3	4.13 x 2.94m		13'7" x 9'8"
BATHROOM	3.66 x 2.61m		12'0" x 8'7"
UTILITY	3.13 x 2.13m		10'3" x 7'0"
GARAGE	5.64 x 3.12m		18'6" x 10'3"



UPPER GROUND FLOOR

FAMILY KITCHEN	9.48 x 6.60m		31'1" x 21'8"
MASTER BEDROOM	4.67 x 3.78m		15'4" x 12'5"
EN-SUITE	2.89 x 1.41m		9'6" x 4'8"
CLOAKROOM	1.68 x 1.41m		5'6" x 4'8"

Please note: Arrows denote measurement positions. Floor plans and house type illustrations shown for guidance purposes only. All dimensions are provisional and should be checked on site. Colours, sizes and styles of doors, windows, landscape features and other such details may vary.