



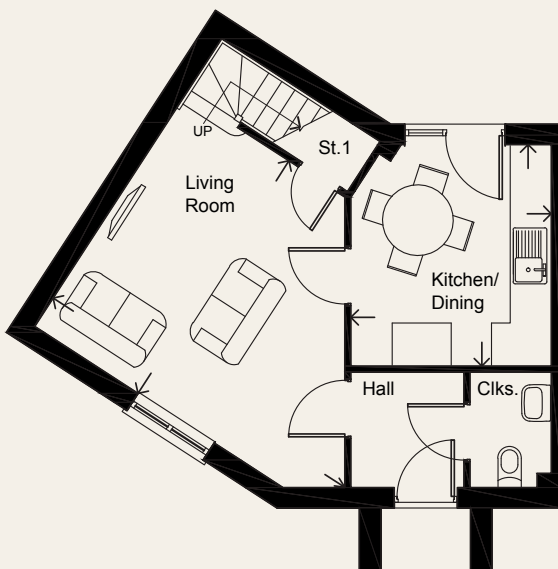
Affordable Home Plot 40

2 Bedroom semi-detached house with 2 parking spaces

FLOOR AREA: 70M² / 751 SQ FT

OverSands View

GRANGE-OVER-SANDS



GROUND FLOOR

Living Room	5.16 x 4.11 m	16' 11" x 13' 6"
Kitchen/Dining	3.28 x 2.96 m	10' 9" x 9' 9"
Cloaks	1.69 x 1.18 m	5' 7" x 3' 10"

FIRST FLOOR

Master Bedroom	4.11 x 3.82 m	13' 6" x 12' 6"
Bedroom 2	2.96 x 2.83 m	9' 9" x 9' 3"
Bathroom	2.14 x 1.70 m	7' 0" x 5' 7"



Russell Armer
Homes

01539 724282

www.russell-amer.co.uk

PLEASE NOTE: Arrows denote measurement positions. Floor plans and house type illustrations are shown for guidance purposes only. All Dimensions are provisional and should be checked on site. Colours, sizes and styles of doors, windows, landscape features and other such details may vary.