



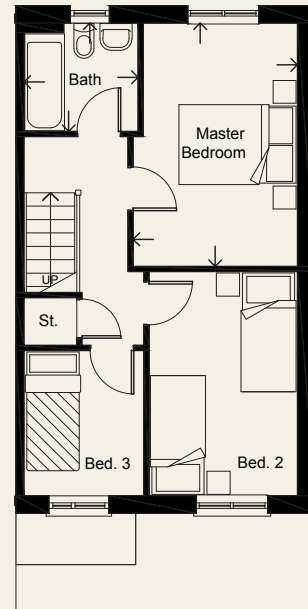
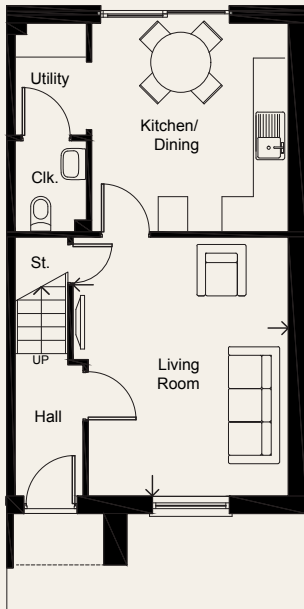
Affordable Home Plot 39

3 Bedroom semi-detached house with 2 parking spaces

OverSands View

FLOOR AREA: 79 M² / 844 SQ FT

GRANGE-OVER-SANDS



GROUND FLOOR

Living Room	4.51 x 3.75 m	14' 10" x 12' 4"
Kitchen/Dining	3.63 x 3.42 m	11' 11" x 11' 3"
Utility Room	1.94 x 1.22 m	6' 4" x 4' 0"
Cloaks	1.57 x 1.22 m	5' 2" x 4' 0"

FIRST FLOOR

Master Bedroom	4.24 x 2.85 m	13' 11" x 9' 4"
Bedroom 2	3.91 x 2.57 m	12' 10" x 8' 5"
Bedroom 3	2.52 x 2.07 m	8' 3" x 6' 9"
Bathroom	1.97 x 1.87 m	6' 6" x 6' 2"