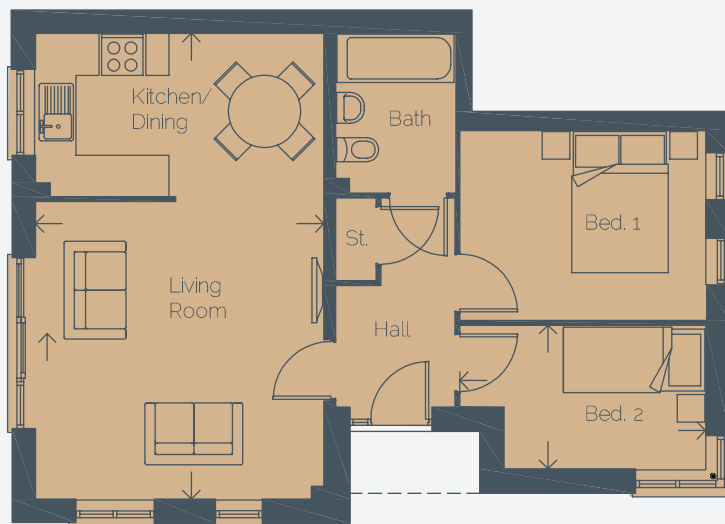




THE SYCAMORE 'A' AFFORDABLE HOME - PLOT 11

2 bedroom ground
floor apartment
with 1 parking space

Floor Area: 56m² | 601 sq ft



GROUND FLOOR

Living/Dining/Kitchen 6.75 x 4.16m | 22'2" x 13'8"

Bedroom 1 3.54 x 2.73m | 11'7" x 8'11"

Bedroom 2 3.54 x 2.06m | 11'7" x 6'9"

Bathroom 2.29 x 1.72m | 7'6" x 5'8"