



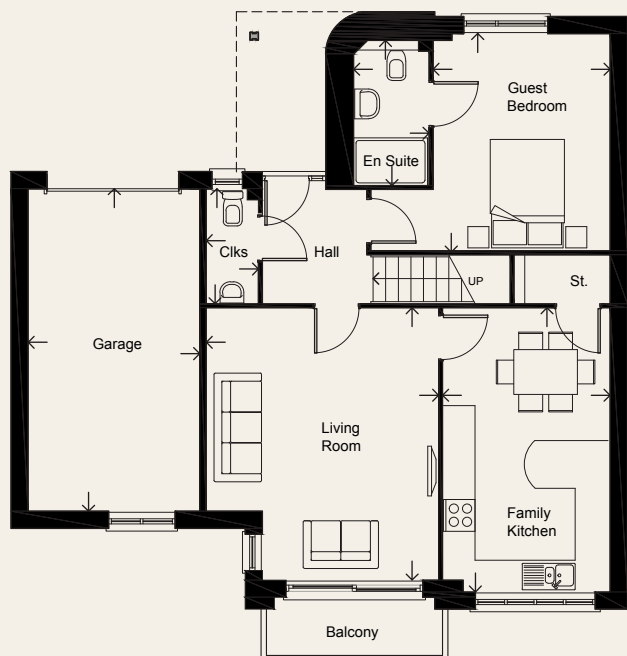
The Lapwing (B) Plot 25

4 bedroom house with integral garage

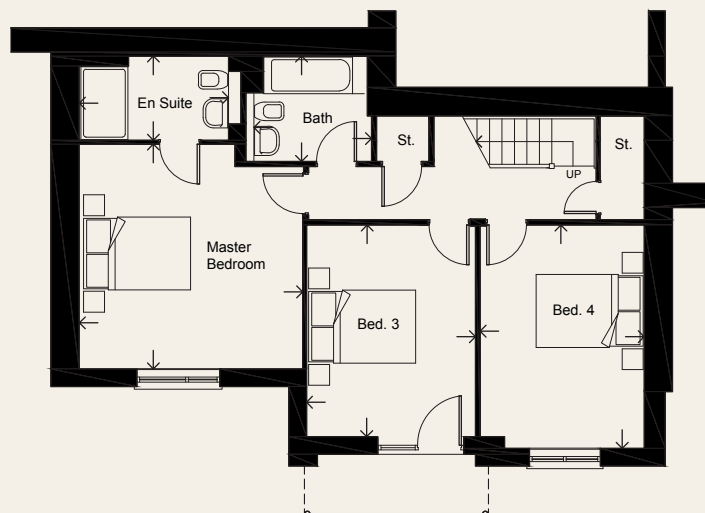
OverSands View

FLOOR AREA: 136M² / 1465 SQ FT

GRANGE-OVER-SANDS



UPPER GROUND FLOOR		
Living Room	5.12 x 4.36m	16'10" x 14'4"
Kitchen/Dining	5.34 x 3.14m	17'6" x 10'4"
Guest Bedroom	4.07 x 3.32m	13'4" x 10'11"
En-suite	2.71 x 1.40m	8'11" x 4'7"
Cloaks	2.15 x 0.94m	7'1" x 3'1"
Garage	6.07 x 3.26m	19'11" x 10'8"



LOWER GROUND FLOOR		
Master Bedroom	4.30 x 4.23m	14'1" x 13'11"
En-suite	2.82 x 1.59m	9'3" x 5'3"
Bedroom 3	4.10 x 3.23m	13'5" x 10'7"
Bedroom 4	4.27 x 3.12m	14'0" x 10'3"
Bathroom	2.38 x 1.99m	7'10" x 6'6"