



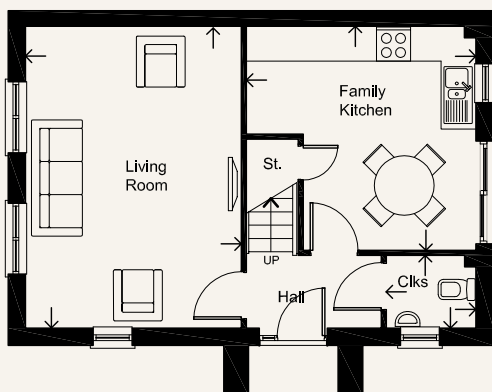
# The Goldfinch (B) Plot 31

3 bedroom house with detached garage

FLOOR AREA: 83M<sup>2</sup> / 890 SQ FT

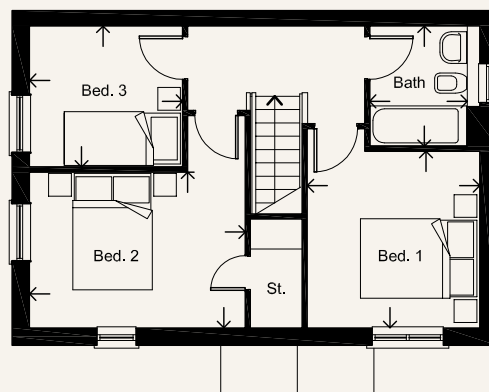
OverSands View

GRANGE-OVER-SANDS



## GROUND FLOOR

Living Room	5.29 x 3.78m	17'4" x 12'5"
Family Kitchen	4.02 x 3.92m	13'2" x 12'10"
Cloaks	1.55 x 1.25m	5'1" x 4'1"
Garage	5.64 x 3.00m	18'6" x 9'10"



## FIRST FLOOR

Bedroom 1	3.08 x 3.01m	10'1" x 9'11"
Bedroom 2	3.78 x 2.72m	12'5" x 8'11"
Bedroom 3	2.67 x 2.46m	8'9" x 8'1"
Bathroom	2.09 x 1.70m	6'10" x 5'7"



**Russell Armer**  
Homes

01539 724282

[www.russell-amer.co.uk](http://www.russell-amer.co.uk)

PLEASE NOTE: Arrows denote measurement positions. Floor plans and house type illustrations are shown for guidance purposes only. All Dimensions are provisional and should be checked on site. Colours, sizes and styles of doors, windows, landscape features and other such details may vary.