

Affordable Home Plot 9

2 bedroom house with two parking spaces

FLOOR AREA: 83M² / 893 SQ. FT



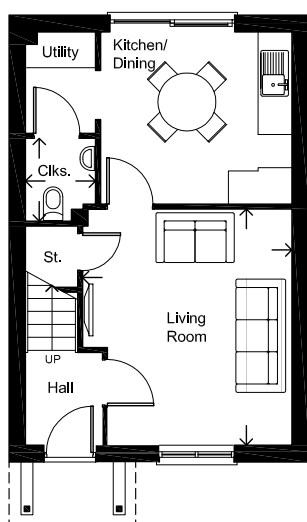
OverSands View

GRANGE-OVER-SANDS



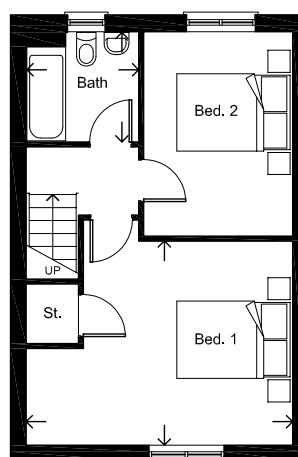
FRONT ELEVATION (SOUTH WEST)

Facing OverSands View



GROUND FLOOR

Living Room	4.25 x 3.76m	13'11" x 12'4"
Kitchen/Dining	3.44 x 3.09m	11'3" x 10'2"
Utility Area	1.81 x 1.22m	5'11" x 4'0"
Cloaks	1.47 x 1.24m	4'10" x 4'1"



FIRST FLOOR

Bedroom 1	4.80 x 3.67m	15'9" x 12'0"
Bedroom 2	3.67 x 2.67m	12'0" x 8'9"
Bathroom	2.01 x 1.97m	6'7" x 6'6"



Russell Armer
Homes

01539 724282
www.russell-amer.co.uk

PLEASE NOTE: Arrows denote measurement positions. Floor plans and house type illustrations are shown for guidance purposes only. All Dimensions are provisional and should be checked on site. Colours, sizes and styles of doors, windows, landscape features and other such details may vary.