



# Affordable Home Plots 3 & 42\* (\*Opposite hand)

2 bedroom first floor floor apartment with two parking spaces

OverSands View

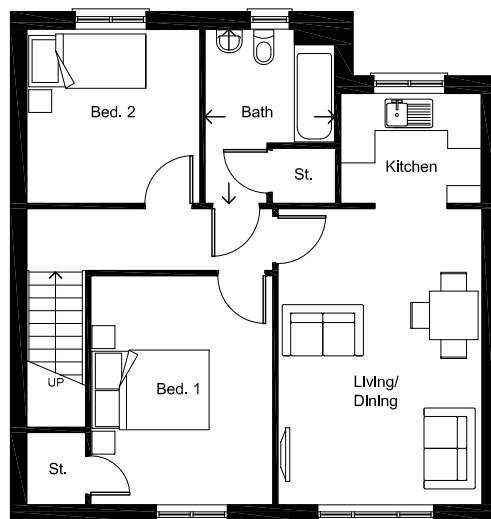
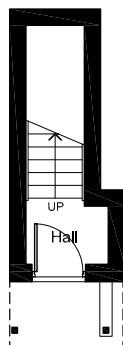
FLOOR AREA: 62M<sup>2</sup> / 730 SQ FT

GRANGE-OVER-SANDS



FRONT ELEVATION (SOUTH WEST)

Facing OverSands View



### FIRST FLOOR

Living/Dining	5.17 x 3.55m	17'0" x 11'8"
Kitchen	2.43 x 1.90m	8'0" x 6'3"
Bedroom 1	3.99 x 3.16m	13'1" x 10'4"
Bedroom 2	3.03 x 3.00m	9'11" x 9'10"
Bathroom	3.03 x 2.24m	9'11" x 7'4"