

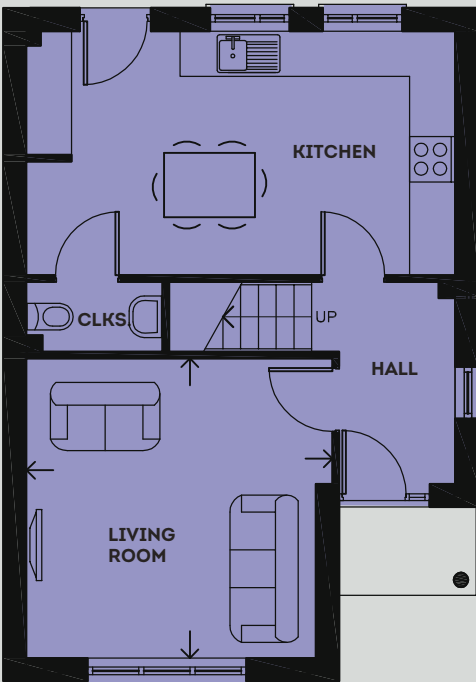
THE BEETHAM



THE BEETHAM

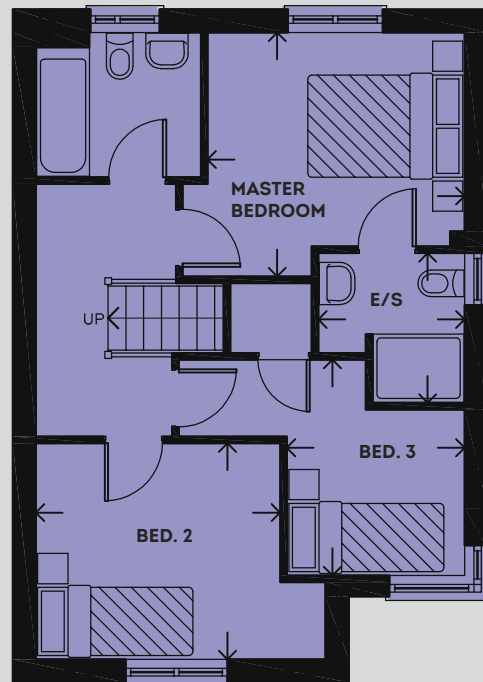
LOTS: 23*, 24, 40 & 54 - 3 BEDROOM HOUSE WITH SEPARATE GARAGE

*Opposite hand plot



GROUND FLOOR

| | | |
|-------------|--------------|----------------|
| Living Room | 4.02 x 3.93m | 13'2" x 12'11" |
| Kitchen | 5.64 x 3.20m | 18'6" x 10'6" |
| Cloaks | 1.77 x 0.90m | 5'10" x 2'11" |
| Garage | 5.64 x 3.00m | 18'6" x 9'10" |



FIRST FLOOR

| | | |
|----------------|--------------|---------------|
| Master Bedroom | 3.37 x 3.20m | 11'1" x 10'6" |
| En-suite | 1.95 x 1.90m | 6'5" x 6'3" |
| Bedroom 2 | 3.20 x 2.83m | 10'6" x 9'3" |
| Bedroom 3 | 2.82 x 2.32m | 9'3" x 7'7" |
| Bathroom | 2.15 x 1.88m | 7'1" x 6'2" |